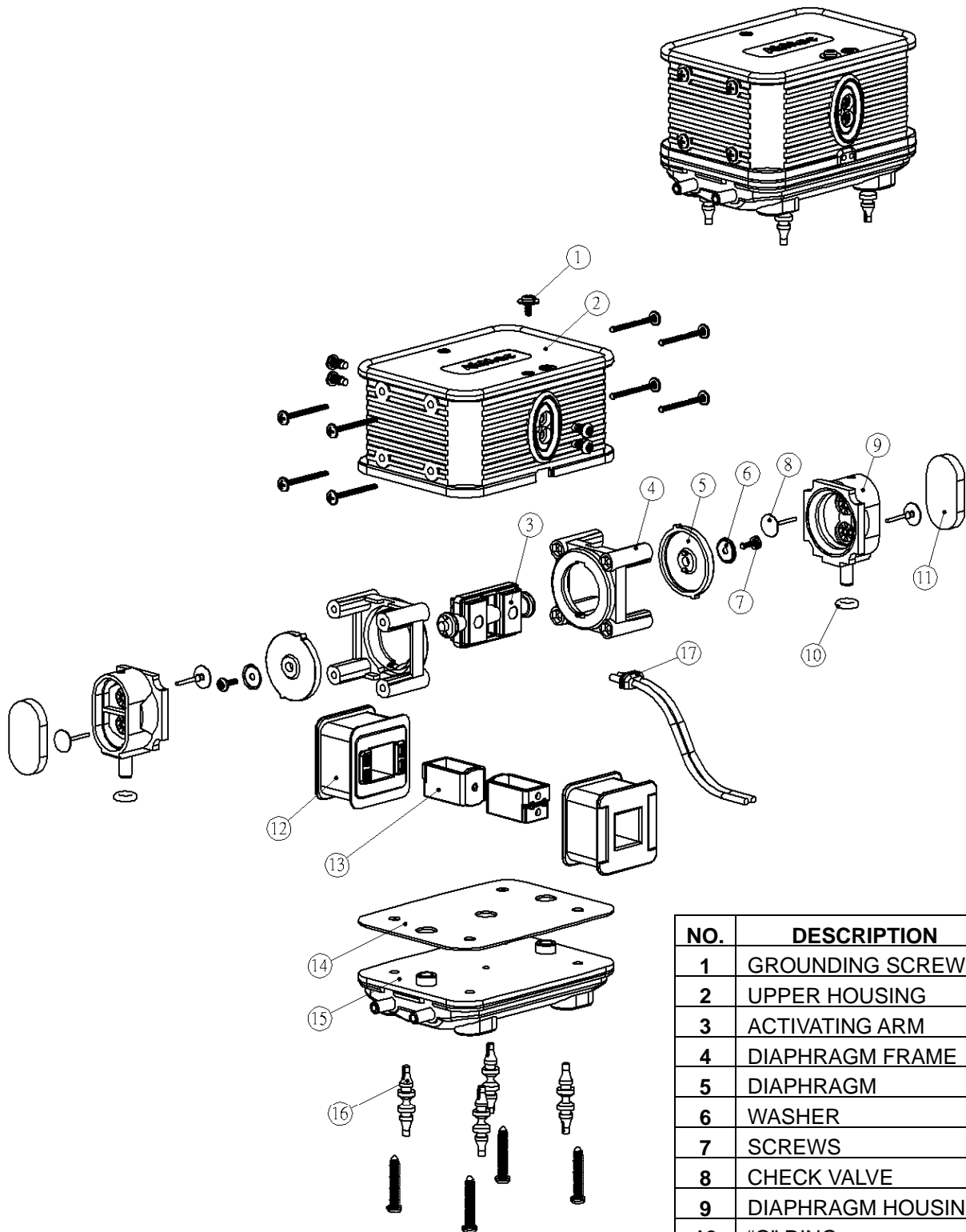


DB10S version series



NO.	DESCRIPTION	QTY
1	GROUNDING SCREWS	1
2	UPPER HOUSING	1
3	ACTIVATING ARM	1
4	DIAPHRAGM FRAME	2
5	DIAPHRAGM	2
6	WASHER	2
7	SCREWS	2
8	CHECK VALVE	4
9	DIAPHRAGM HOUSING	2
10	"O" RING	2
11	CHAMBER SEAL	2
12	ELECTROMAGNET	2
13	CENTER STEEL	2
14	GASKET	1
15	LOWER HOUSING	1
16	RUBBER FEET	4
17	CORD RELIEF	1